

2 TONNE HIGHLIFT TROLLEY JACK

EXTRA LONG & LOW PROFILE





Disclaimer:

The information in this document is to the best of our knowledge true and accurate, but all recommendations or suggestions are made without guarantee. Since the conditions of use are beyond their control, Tundra Industrial ® disclaim any liability for loss or damage suffered from the use of this data or suggestions. Tundra Industrial ® reserve the right to change product specifications and warranty statements without further notification. All images are for illustration purposes only.

1. SAFETY GUIDELINES

1.1 Please read the following guidelines carefully before using this equipment. This equipment must be kept clean and kept in good working order in order to ensure safe and effective operation. Inspect the equipment carefully before use and do not use if any defects are identified. Contact your nearest Tundra Industrial Dealer for further information on repairs and replacement parts.

1.2 The maximum load for this equipment is **2 Tonnes**. Do not exceed this rated capacity.

1.3 Centre the load on the saddle before lifting.

1.4 This jack is a lifting device **ONLY**. Support the vehicle with appropriate means immediately after lifting.

1.5 Do not go under the vehicle after lifting until it is supported correctly with axle stands.

1.6 Do not move or dolly the vehicle after lifting until it is supported correctly with axle stands.

1.7 Use jacks only on areas of the vehicle as specified by the vehicle manufacturer.

1.8 Use this bottle jack for the purpose for which it is intended. **Do not** use it for any other purpose it is not designed to perform. Do not modify or attempt to enhance the equipment in any way.

1.9 Keep children, unauthorized persons & animals away from the work area.

1.10 Only use this jack on a hard surface that is stable, level, dry and not slippery, and capable of sustaining the load.

1.11 Inspect the jack before each use. Do not use if bent, broken, cracked, leaking or otherwise damaged, any suspect parts are noted or it has been subjected to a shock load.

1.12 Check to ensure that all applicable bolts and nuts are firmly tightened.

1.13 Do not operate the jack when you are tired or under the influence of alcohol, drugs or any intoxicating medication.

1.14 Do not allow untrained persons to operate the jack.

1.15 Do not make any modifications to the jack.

1.16 Do not use brake fluid or any other incorrect fluid and avoid mixing different types of oil when adding hydraulic oil. Only good quality hydraulic jack oil should be used.

1.17 If the jack needs repairing and/or there is any part that needs to be replaced, have it repaired by authorized technicians and only use the replacement parts supplied by the manufacturer.



WARNING:

No responsibility is accepted for incorrect use of this equipment. Incorrect use can result in damage to the equipment and danger to the user. Warranty will be void in the event of incorrect use. Hydraulic products are only repaired by Tundra Industrial authorised engineers. The warnings, cautions and instructions discussed in this instruction manual cannot cover all possible conditions and situations that may occur. It must be understood by the operator that common sense and caution are factors which cannot be built into this product, but must be supplied by the operator.

2. SPECIFICATIONS

Model Number	TUNJKTRLY02
Maximum Load:	2 Tonne
Minimum Height:	80mm
Maximum Height:	795mm
Length:	950mm
Weight (NW/GW):	52kg / 57kg

3. DESCRIPTION

High lift jack arm with incredible low access height of just 80mm. Fitted with quick lift foot pedal and dead man's control. Heavy-duty long steel chassis with wide wheelbase provides inherent stability and easy access to deep set jacking points. Fitted with one-piece hydraulic unit with built-in safety overload protection. Features include:

- Lifting range of 80mm - 795mm
- Manufactured from heavy-duty steel for strength and durability
- Twin pump
- Quick lift
- Extra long & low profile

4. ASSEMBLY

Loosen locating bolt at the side of the handle base. Push handle into socket and re-tighten locating bolt, ensuring that it fits correctly in the groove.

- Before using the jack for the first time, purge the hydraulic circuit in order to eliminate any air in the system. To do so, pull the handle upward and turn it anti-clockwise to open the release valve. Hold the handle in the open position and pump it up and down 7 or 8 times. To close the hydraulic valve turn the handle clockwise and push down.
- Place a few drops of hydraulic jack oil on the pump piston and pump the handle several times to distribute the oil.
- Thoroughly lubricate all moving parts.

5. OPERATING INSTRUCTIONS

WARNING! Ensure you prepare vehicle and use jack according to Section 1 SAFETY INSTRUCTIONS. Check that the supporting ground upon which the jack will stand is level and solid and not tarmacadam.

- Position the jack saddle under the vehicle manufacturer's recommended lifting point (see vehicle handbook).
- Ensure the release valve is closed (i.e. the handle is pushed down and turned fully clockwise). Commence pumping the handle, or the foot pedal, using the full stroke, until the vehicle reaches the working height.
- Should the jack become overloaded, a safety excess pressure valve will open and stop the vehicle from lifting.
- Position axle stands under the vehicle before attempting any work.

Lowering the load

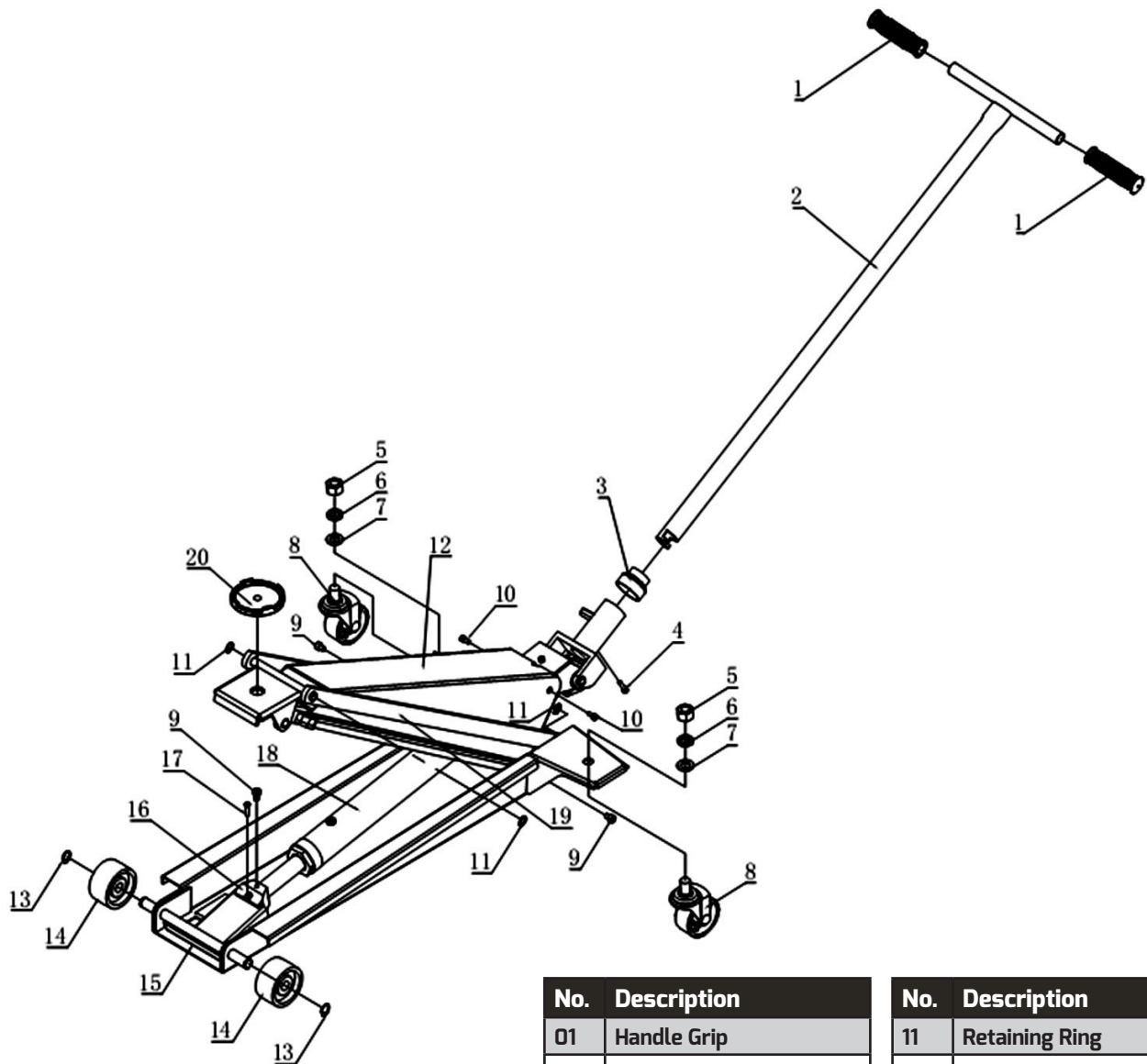
- Pull the handle up and turn it anti-clockwise to open the valve and lower the load.
- The lowering speed is controlled and constant regardless of how much you turn the handle.

WARNING! Ensure that there are no persons or obstacles beneath the vehicle, or in the path of descent.

6. TROUBLESHOOTING

Symptom	Possible Causes	Solution
Jack will not lift the load	<ol style="list-style-type: none"> 1. Overloaded 2. Low oil level 3. Release valve not correctly closed 4. Air in system 5. Piston rod not functioning 6. Packing worn or defective 	<ol style="list-style-type: none"> 1. Be sure to use jack with adequate capacity 2. Top up oil lever 3. Check and close release valve 4. Open release valve and pump the handle a few times. Close valve and re-try 5. Clean and replace oil 6. Replace packing
Jack does not lift high enough or feels 'spongy'	<ol style="list-style-type: none"> 1. Oil level too high or too low 2. Worn seals 3. Air in system 4. Release valve not closed 	<ol style="list-style-type: none"> 1. Fill or remove excess oil 2. Return jack to local service agent 3. Open release valve and pump the handle a few times. Close valve and re-try 4. Check and close release valve
Jack lifts poorly	<ol style="list-style-type: none"> 1. Pump packing or valves malfunctioning 2. Oil is dirty 3. Air in the system 	<ol style="list-style-type: none"> 1. Replace packing and / or clean valves 2. Replace oil 3. Open release valve and pump the handle a few times. Close valve and re-try
Jack lifts but will not hold load	<ol style="list-style-type: none"> 1. Release valve partially open 2. Dirt on valve seats 3. Air in system 4. Faulty seals 5. Packing worn or defective 	<ol style="list-style-type: none"> 1. Check and close release valve. 2. Lower jack, close release valve. Place foot on front wheel and pull up lifting arm to full height by hand. Open the release valve to lower arm 3. Open release valve and pump the handle a few times. Close valve and re-try 4. Replace or contact local service agent 5. Replace packing
Jack will not lower completely	<ol style="list-style-type: none"> 1. Unit requires lubrication 2. Piston rod bent or damaged 3. Jack frame / link system distorted due to overloading / poor positioning 4. Air in system 5. Release valve partially closed 6. Jack spring damaged 	<ol style="list-style-type: none"> 1. Oil all external moving parts 2. Replace rod or contact local service agent 3. Replace damaged parts or contact local service agent 4. Open release valve and pump the handle a few times. Close valve and re-try 5. Check and fully open release valve. 6. Replace spring or contact local service agent
Jack does not lower at all	<ol style="list-style-type: none"> 1. Release valve closed 	<ol style="list-style-type: none"> 1. Check and fully open release valve

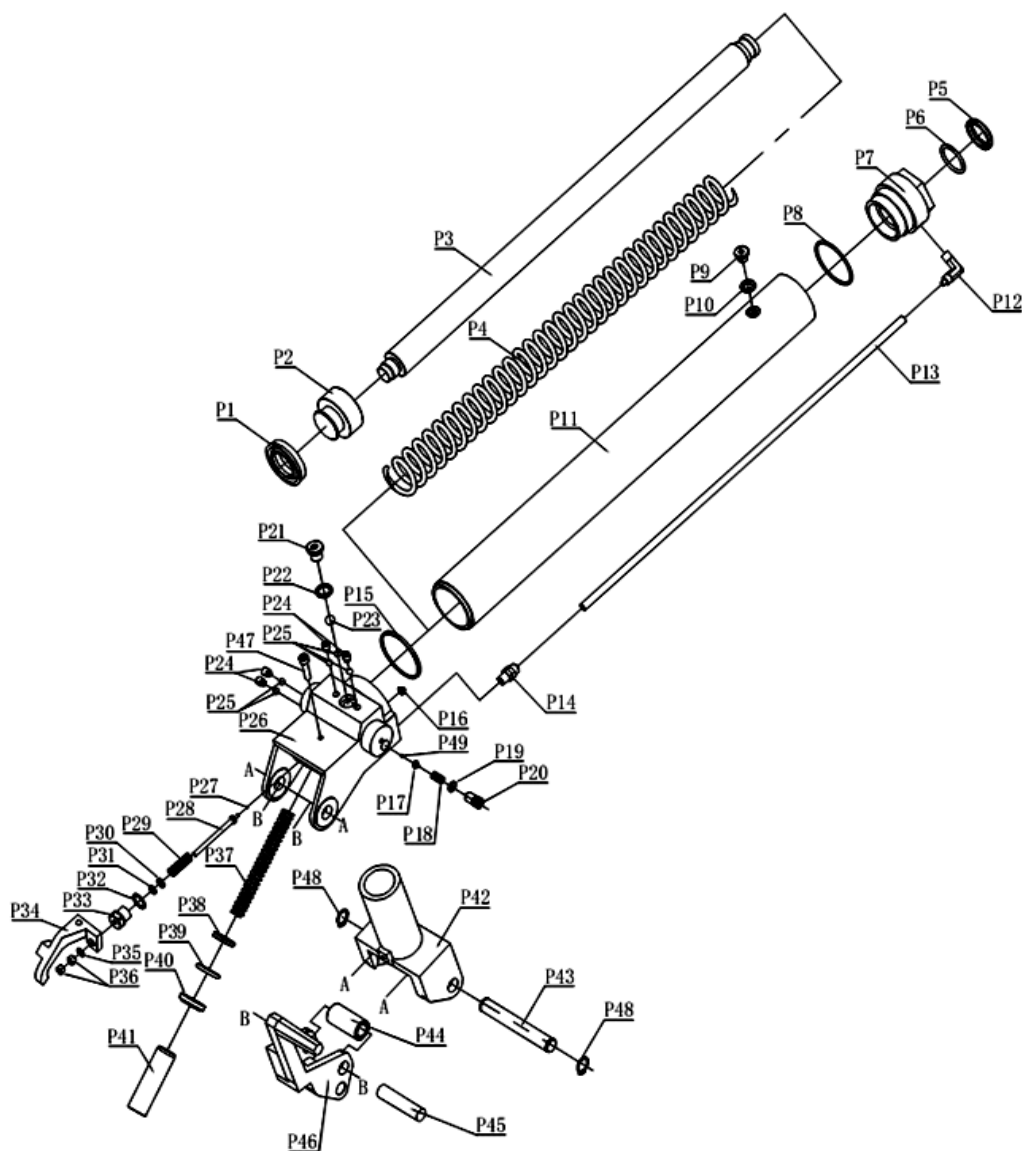
7. PARTS LIST & EXPLODED PARTS DIAGRAMS



No.	Description
01	Handle Grip
02	Handle
03	Dust Cap
04	Screw
05	Nut
06	Lock Washer
07	Washer
08	Wheel Assembly
09	Screw
10	Screw

No.	Description
11	Retaining Ring
12	Lifting Frame Assembly
13	Retaining Ring
14	Fixed Wheel
15	Base Frame Assembly
16	Saddle Holder
17	Screw
18	Hydraulic Unit
19	Link Arm
20	Saddle Assembly

No.	Description
01	U-Ring
02	Piston
03	Piston Rod
04	Spring
05	Dust Ring
06	O-Ring
07	Ram Cover
08	O-Ring
09	Screw
10	Seal Washer
11	Cylinder
12	Joint
13	Pu Hose
14	Joint
15	Washer
16	Filter
17	Steel Ball Seat
18	Spring
19	O-Ring
20	Valve Seat
21	Screw
22	Seal Washer
23	Steel Ball
24	Screw
25	Steel Ball
26	Pump Body
27	Steel Ball
28	Unloader Valve Rod
29	Spring
30	Washer
31	O-Ring
32	Copper Washer
33	Valve Seat
34	Unloader Plate
35	Washer
36	Nut
37	Spring
38	U-Ring



No.	Description
39	O-Ring
40	Dust Ring
41	Pump Piston
42	Handle Socket
43	Pin, Handle Socket
44	Spacer, Handle Socket

No.	Description
45	Pin, Pedal
46	Pedal
47	Screw
48	Retaining Ring
49	Steel Ball



USER MANUAL

TUNJKTRLY02

8. MAINTENANCE

NOTICE: Use high grade hydraulic oil only. Never use brake fluid, motor oil, transmission fluid, turbine oil or any other fluids. ISO-VG22 or equivalent hydraulic oil is recommended.

Check and Refill Oil

- With the jack fully lowered and in a level location, if unit cover is provided, remove unit cover, then remove oil filler plug.
- The oil should just cover the inner cylinder as seen from the oil filler plug hole.
- Do not overfill. Always fill with new, clean hydraulic jack oil as recommended above.
- Replace oil filler plug, then replace unit cover.

Lubrication and Cleaning

- Periodically clean and lubricate all moving parts and pivot points.

Air Venting Procedures

- With the jack fully lowered and the release valve open, remove the oil filler plug.
- Pump the handle rapidly several times. Replace the oil filler plug.
- Turn the handle/release valve clockwise to the closed position.
- Pump the handle until the lift arm reaches maximum height. Continue to pump several times to remove trapped air in the system.
- Turn the handle/release valve counterclockwise one full turn and lower the lift arm to the lowest position. Use force on saddle if necessary.
- Carefully and slowly loosen oil filler plug to release pressurized air.
- Repeat above steps until trapped air is completely vented.

Damaged Equipment

- Any jack that appears to be damaged in any way, is found to be worn, or operates abnormally SHOULD BE REMOVED FROM SERVICE UNTIL REPAIRED. It is recommended that necessary repairs be made by a manufacturer's or supplier's authorized repair facility if repairs are permitted by the manufacturer or supplier.

Alterations

- Because of potential hazards associated with this type of equipment, no alterations shall be made to the product.

Attachments and Adapters

- Only attachments and/or adapters supplied by the manufacturer shall be used.

EC DECLARATION OF CONFORMITY

We, Tundra Industrial, as the authorised European Community representative of the manufacturer, declare that the following equipment conforms to the requirements of the following Directives:

BS EN 1494:2000+A1:2008

Mobile or movable jacks and associated lifting equipment

2006/42/EC (as amended)

Machinery Directive

Equipment Category: Trolley Jack / Lifting Equipment
Product Name/Model: TUNJKTRLY02 - 2 Tonne Trolley Jack
Maximum Load: 2 Tonne

Signed by: Stephen McIntyre
Position in the company: Operations Director
Date: 09 March 2016
This technical document is held by: Jimmy Hemphill



Technical file holder's address as shown below

Name and address of manufacturer or authorised representative:

Tundra Industrial,
Herons Way,
Chester Business Park,
Chester,
United Kingdom,
CH4 9QR

Telephone: **+44 (0)1244 646 048**
Fax: **+44 (0)1244 241 1**



USER MANUAL

TUNJKTRLY02

LIMITED WARRANTY STATEMENT

Tundra Industrial warrants its customers that its products will be free of defects in workmanship or material.

Tundra Industrial shall, upon suitable notification, correct any defects, by repair or replacement, of any parts or components of this product that are determined by Tundra Industrial to be faulty or defective.

This warranty is void if the equipment has been subjected to improper installation, storage, alteration, abnormal operations, improper care, unauthorised service or repair.

Warranty Period

Tundra Industrial will assume both the parts and labour expense of correcting defects during the stated warranty periods below. All warranty periods start from the date of purchase from an authorised Tundra Industrial dealer. If proof of purchase is not available from the end user, then the date of purchase will be deemed to be 3 months after the initial sale to the distributor.

1 Year

- ***Tundra Industrial 2 Tonne Trolley Jack - [TUNJKTRLY02]***

90 Days

- ***All replacement parts purchased outside of the warranty period***

Important: All parts used in the repair or replacement of warranty covered equipment will be subject to a minimum of 90 days cover or the remaining duration of the warranty period from the original date of purchase.

Warranty Registration / Activation

You can register and activate your warranty by visiting the Jefferson Tools website using the following address: www.jeffersontools.com/warranty and completing the online form. Online warranty registration is recommended as it eliminates the need to provide proof of purchase should a warranty claim be necessary.

Warranty Repair

Should Tundra Industrial confirm the existence of any defect covered by this warranty the defect will be corrected by repair or replacement at an authorized Tundra Industrial dealer or repair centre.

Packaging & Freight Costs

The customer is responsible for the packaging of the equipment and making it ready for collection. Tundra Industrial will arrange collection and transportation of any equipment returned under warranty. Upon inspection of the equipment, if no defect can be found or the equipment is not covered under the terms of the Tundra Industrial warranty, the customer will be liable for any labour and return transportation costs incurred. These costs will be agreed with the customer before the equipment is returned.

Warranty Limitations

Tundra Industrial will not accept responsibility or liability for repairs made by unauthorised technicians or engineers. Tundra Industrial's liability under this warranty will not exceed the cost of correcting the defect of the Tundra Industrial products. Tundra Industrial will not be liable for incidental or consequential damages (such as loss of business or hire of substitute equipment etc..) caused by the defect or the time involved to correct the defect. This written warranty is the only express warranty provided by Tundra Industrial with respect to its products.

Any warranties of merchantability are limited to the duration of this limited warranty for the equipment involved. Tundra Industrial is not responsible for cable wear due to flexing and abrasion. The end user is responsible for routine inspection of cables for possible wear and to correct any issues prior to cable failure.

Claiming Warranty Coverage

The end user must contact Tundra Industrial (Tel: **+44 (0) 1244 646 048**) or their nearest authorised Tundra Industrial dealer where final determination of the warranty coverage can be ascertained.

Step 1 - Reporting the Defect

Online Method:

- Visit the website www.jeffersonstools.com/warranty and complete the Warranty Returns form. You can complete the form online and submit it to us directly or download the form to print out and return by post.

Telephone Method:

Contact your Tundra Industrial dealer or sales representative with the following information:

- Model number
- Serial number (usually located on the specification plate)
- Date of purchase

A Warranty Returns form will be sent to you for completion and return by post or fax, together with details of your nearest authorised Tundra Industrial repair centre. On receipt of this form Tundra Industrial will arrange to collect the equipment from you at the earliest convenience.

Step 2 - Returning the Equipment

It is the customer's responsibility to ensure that the equipment is appropriately and securely packaged for collection. Please ensure that you include a copy of your proof of purchase. Please note that Tundra Industrial cannot assume any responsibility for any damage incurred to equipment during transit. Any claims against a third party courier will be dealt with under the terms & conditions of their road haulage association directives.

Step 3 - Assessment and Repair

On receipt, the equipment will be assessed by an authorised Tundra Industrial engineer and it will be determined if the equipment is defective and in need of repair and any repairs needed are covered by the warranty policy. In order to qualify for warranty cover all equipment presented must have been used, serviced and maintained as instructed in the user manual.

Where repair is not covered by the warranty a quotation for repair, labour costs and return delivery will be sent to the customer (normally within 7 working days). **Note:** If the repair quotation is not accepted Tundra Industrial will invoice 1 hour labour time at £30 per hour plus return carriage costs (plus VAT).

In cases where no fault can be found with the equipment, or, if incorrect operation of the equipment is identified as the cause of the problem, a minimum of 1 hour labour at £30 per hour plus carriage costs will be required before the equipment will be despatched back to the customer.

Any equipment repaired or replaced under warranty will normally be ready for shipment back to the customer within 7 working days upon receipt of the equipment at an authorised Tundra Industrial Repair centre (subject to part availability). Where parts are not immediately available Tundra Industrial will contact you with a revised date for completion of the repair.

General Warranty Enquiries

For any further information relating to Tundra Industrial warranty cover please call **+44 (0) 1244 646 048**.

