



User Manual

v.1.2

120Bar • 1400W
High Pressure Washer

JEFWASE360-120



1. Introduction

This equipment is designed for a wide range of cleaning operations including: vehicles; buildings; tools; terraces; decking; farming equipment; boats etc. using a high pressure water jet and detergents if required.

Please read these instructions carefully and keep in a safe location for future reference. Ensure that the manual is passed on should ownership of the equipment change at any time.

Contact your nearest Jefferson Dealer for advice on correct usage, accessories (including compatible detergents), servicing and replacement parts.

Do not modify this equipment for any other purpose than those originally intended by the manufacturer.

Ensure that the product is used in accordance with the guidelines described in this manual. Failure to do so can result in personal injury and may void the warranty.

2. General Safety Guidelines

Never touch the mains plug or plug socket when hands are wet. Ensure that the mains plug and any extension cables are kept watertight and dry and never lie under water.

Check the washer and all accessories carefully before use. Do not use the equipment if any damage is detected. Contact your nearest dealer for servicing and repair advice.

This equipment must not be used not be used in working environments where a risk of explosion is present.

Important: High pressure jets can pose a hazard to health and can damage property is used incorrectly.

The high-pressure jet must never be directed at people, animals, live electrical equipment or at the appliance itself. Never use the high pressure jet to clean clothing or footwear during operation.

Never use the appliance to clean objects containing hazardous substances (e.g. asbestos).

Be careful when cleaning vehicle tyres and tyre valves as these can be damaged by the high pressure jet and may burst if used incorrectly. Damaged vehicle tyres and tyre valves are highly dangerous. **Ensure that a distance of at least 30cm is kept when cleaning tyres with a high pressure jet.**

Do not spray flammable liquids or fluids containing solvents or undiluted acids including petrol, paint thinner and heating oil. Any spray mist generated from such fluids can be highly inflammable, explosive and poisonous.

High pressure hoses, fixtures and couplings are important for the safety of the appliance. Only use high pressure hoses, fixtures and couplings recommended by Jefferson Tools. Seek advice on compatibility before using any accessories with this equipment.

This appliance is not intended for use by persons with reduced physical, sensory or mental capabilities. The appliance must not be operated by children or by any persons who have not been instructed in the correct operation.

Children and pets should be kept away from the working environment at all times during operation.

Do not leave the equipment running unattended for any length of time. Always disconnect from the mains and water supply when not in use.

Always operate this equipment on a flat level surface in an upright position.

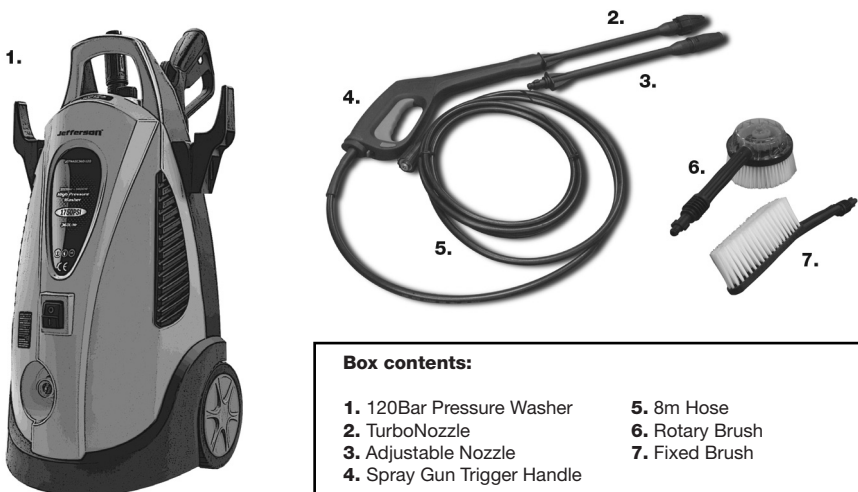
Ensure that there is sufficient free air circulating around the equipment to prevent overheating.

Ensure that the operator and any bystanders wear the appropriate protective clothing and safety goggles to protect against splash back containing water or dirt during operation.



3. Specifications

Model Number	JEFWASE360-120
Maximum Pressure	120bar (1750psi / 13.0MPa)
Rated Pressure	100bar (1450psi / 10.0MPa)
Effective Cleaning Power	205bar (2975psi / 20.7MPa)
Water Flow:	360L/Hr - 6.0L/Min
Motor Power / Speed:	1400W / 2800rpm
Input:	230V (50Hz)
Vibration:	1.606 m/s ²
Guaranteed Sound Level:	88dB
Protection:	IP25
*Automatic TSS System:	Yes
*TurboNozzle:	Yes
Hose Length:	8m
Max Water Temperature:	60°C
Soap Volume:	1.75L
Weight:	NW 13.5kg / GW 15kg



Box contents:

- 1. 120Bar Pressure Washer
- 2. TurboNozzle
- 3. Adjustable Nozzle
- 4. Spray Gun Trigger Handle
- 5. 8m Hose
- 6. Rotary Brush
- 7. Fixed Brush

4. Set-Up



1. Fit the wheels 2. Attach the cable hooks

Connecting To The Water Supply

Use a reinforced hose pipe with an internal diameter of 1/2" when connecting to the mains supply. Ensure that the hose is clean before connecting to the pressure washer by flushing out with clean water.

Connect a 3/4" BSP female hose fitting to the male connection on the rear of the pressure washer as shown in **Fig.1**.

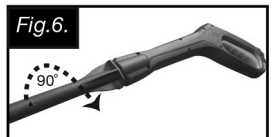
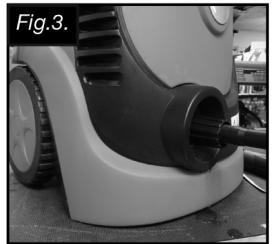
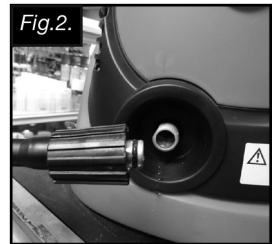
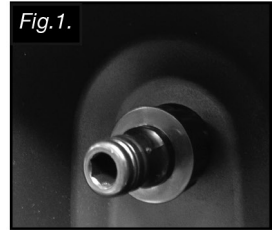
Ensure that you comply with all your local water supply regulations before use. Pressure washers can only be connected to the mains water supply if a check valve is connected to the supply hose to prevent contaminating the supply. Ensure that the supply hose is reinforced with an internal diameter of 1/2" (13mm). Ensure that the supply water temperature does not exceed 50°C and pressure is not greater than 6bar.

Connecting The High Pressure Hose

Attach the high pressure hose to the pressure washer as shown in **Fig.2**, and **Fig.3**. Ensure that the fitting is connected securely before connecting to the mains supply. Attach the other end of the high pressure hose to the trigger gun as shown in **Fig.4**. Ensure that the hose lock is open before inserting the fitting as shown. Once in place move the hose lock back towards the hose connection to lock the hose securely in position.

Lance / Nozzle Connection

Push the lance into position as shown in **Fig.5**, and rotate by 90° to lock into place (**Fig.6**). Ensure that the lance and nozzle are securely connected before connecting to power or water supply as the nozzle and lance can be discharged at high velocity if fitted incorrectly.



5. Operation

1. Initial Checks

Warning: water and electricity are dangerous when used together. Be aware that this equipment uses an electric motor. Always connect to mains supply using an RCD. Unplug from the mains before changing accessories or carry out any servicing.

Check that the inlet filter is clean and free of debris and that a filter is fitted inside the inlet connector. Ensure that the hose, trigger gun, lance and nozzle are connected correctly.

Ensure that the safety catch is engaged when not in use.

Bleed the spray gun prior to connection to the electrical supply by squeezing the trigger. This ensures that any excess air is released before use.

2. Connecting to the electrical supply

Ensure that the **ON/OFF** switch is in the **OFF** position. Connect to the mains supply using an RCD plugged into a 13A mains socket.

Ensure that the equipment is PAT tested at least once a year. Ensure that the voltage marked on the appliance matches the supply.

4. Operation

Hold the spray gun firmly in preparation for the recoil caused by the high pressure of the water when the trigger is pulled.

Ensure that the lance and nozzle are not pointed at individuals. Turn the pressure washer on by turning the switch to the **"ON"** position.

Release the handle safety catch and point the lance at the cleaning area and pull the trigger to release the jet.

Note: The Total Stop System (TSS) ensures that the motor and water supply are cut off when the trigger is released to preserve the life of the motor.

You can adjust the water jet by twisting the nozzle as required.

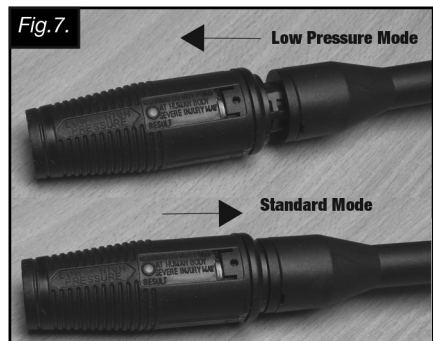
Warning: High pressure cleaning can be damaging to objects and property and cause loose debris to be projected at high speeds.

It is recommended that you start with a spray angle of approximately 20° and increase the power of the jet gradually as required.

Using detergents: Pour compatible detergent into the detergent tank. Set the adjustable nozzle to the low pressure setting by pushing the nozzle forwards as shown in Fig 7. Allow the detergent to act for 1-2 minutes before washing off.

Pull the nozzle back again to the regular pressure setting and remove the detergent with a wide fan setting.

Clean the detergent bottle and tube after use.



6. Maintenance

Warning: Turn off the appliance and remove the mains plug prior to carrying out any maintenance work.

Ensure that nozzles are kept clean and free from dirt, grease & debris.

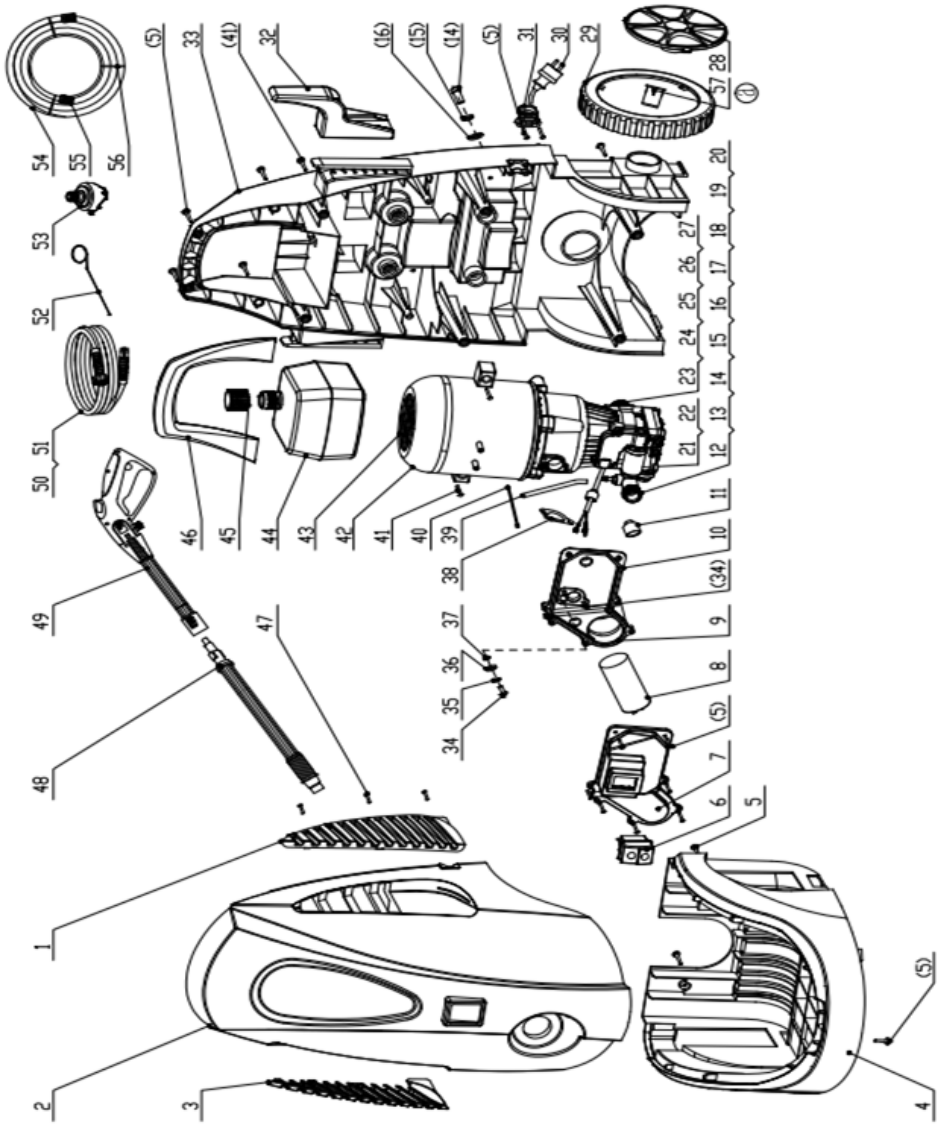
Remove and clean the water filter regularly to protect dirt and debris from getting into the pump and ensure water pressure is maintained at optimum level for operation.

Ensure that the air vents around the pressure washer are kept clean and clear to allow air to be drawn freely into the coolant system.

7. Troubleshooting Guide

PROBLEM	CAUSE
Motor will not start	1. Check plug for loose connections or blown fuse
Water leaking from the pump	1. The system will generate small amounts of leakage during operation and this is normal. If leaking is extreme disconnect from water and mains power before checking all connections are secure and fittings are free from dirt or damage.
Circuit breaker tripping or blown fuse	1. Circuit is overloaded 2. Check extension cable. Problems can arise if cable is too long or too thin. 3. Nozzle is partially blocked causing excessive pressure to build up
Trigger jams	1. Check that the gun safety lock is not engaged
Pump and motor do not stop when trigger is released	1. Trigger is damaged. Contact your dealer or nearest Jefferson Repair Center.
The motor is running but pump is not operating at the correct pressure.	1. Air trapped in the pump. (Let the washer run with the gun open and lance removed for a period of time until a steady stream of water is released. 2. Suction or discharge valves are clogged or worn out. Check that water filter is not clogged or damaged. Contact your dealer or nearest Jefferson Repair Center. 3. Check for a kink in supply hose and that water tap is turned on to full supply pressure.

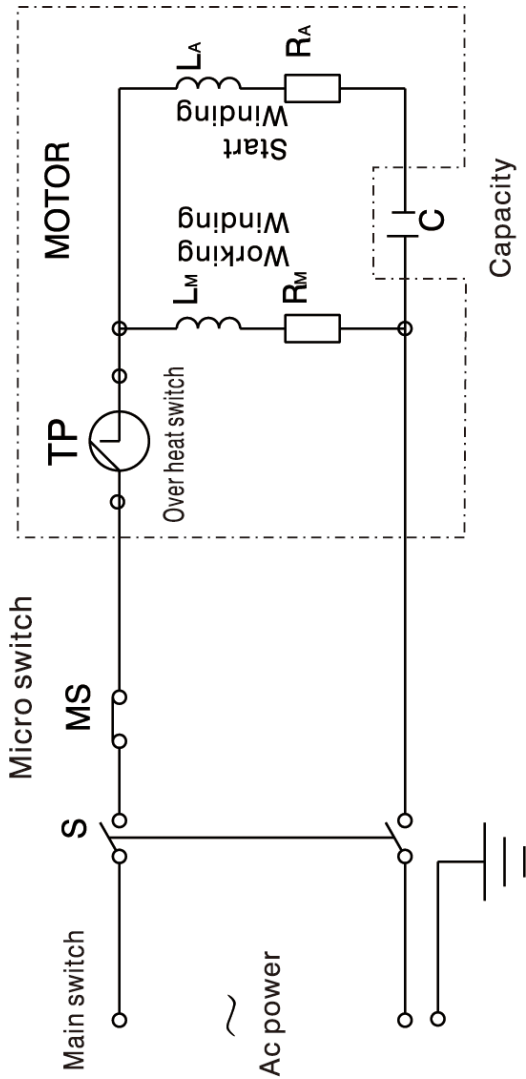
8a. Parts Diagram



8b. Parts List

#	Description	#	Description
1	Right Sequin	31	Power Cord Binder Plate
2	Front Cover	32	Hook
3	Left Sequin	33	Back Cover
4	Base	34	Cross Recessed Pan Head Screw
5	Self-Tapping Screw	35	Spring Pad
6	Power Switch	36	Flat Pad
7	Junction Box Cover	37	Lock Washers External Teeth
8	Capacitor	38	Junction Box Bottom Sealing Ring
9	Junction Box Sealing Strip	39	Detergent Hose
10	Junction Box Bottom	40	Tie Cable
11	Power Cord Seal Cartridge	41	Self-Tapping Screw
12	Pump Components	42	Motor Cover
13	Motor Components	43	Motor Fan
14	Hexagon Socket Screw	44	Detergent Bottles
15	Spring Pad	45	Detergent Bottle Caps
16	Flat Pad	46	Handle Cover
17	Swash Plate	47	Self-Tapping Screw
18	Bearing Assembly	48	Gun Lance Components
19	Outlet Cap	49	Gun Handle Components
20	32 Hydraulic Oil	50	High Pressure Hose Components
21	Spring Pad	51	Tie Cable
22	Hexagon Socket Screw	52	Cleaning Pin
23	Flat Pad	53	Adapter Assembly
24	Water-In Filter Screen	54	Water Supply Hose
25	Water-In Nut Sealer	55	Quick Connector Components
26	Water-In Nut	56	Tie Cable
27	O-Rings	57	Big Wheel Strengthen Bearing
28	Big Wheel Sequin		
29	Big Wheel		
30	Power Cord		

9. Circuit Diagram



EC Declaration Of Conformity

We, Jefferson Professional Tools & Equipment, as the authorised European Community representative of the manufacturer, declare that the following equipment conforms to the requirements of the following Directives:

2000/14/EC (as amended)

2006/42/EC (as amended)

2006/95/EC (as amended)

2004/108/EC (as amended)

**Noise Emission in the Environment by
Equipment for Use Outdoors:**

Machinery Directive:

Low Voltage Directive:

EMC Directive:

Equipment Category: Electric Pressure Washer
Product Name/Model: JEFWASE360-120 • 120Bar High Pressure Washer (1400w)

The conformity assessment procedure followed was in accordance with Annex V of the Outdoor Noise Directive.

Notified Body: SNCH Luxembourg GmbH. (No. 0499)
Measured Sound Power Level: 87dB
Guaranteed Sound Power Level: 88dB

Signed by: Stephen McIntyre
Position in the company: Operations Director
Date: 11 November 2014
This technical document is held by: Jimmy Hemphill

Technical file holder's address as shown below

Name and address of manufacturer or authorised representative:

Jefferson Tools, Herons Way, Chester Business Park, Chester, United Kingdom, CH4 9QR
Telephone: +44 (0)1244 646 048 Fax: +44 (0)1244 241 191 Email: enquiries@jeffersonstools.com

Limited Warranty Statement

Jefferson Professional Tools & Equipment, or hereafter "Jefferson" warrants its customers that its products will be free of defects in workmanship or material.

Jefferson shall, upon suitable notification, correct any defects, by repair or replacement, of any parts or components of this product that are determined by Jefferson to be faulty or defective.

This warranty is void if the equipment has been subjected to improper installation, storage, alteration, abnormal operations, improper care, unauthorised service or repair.

Warranty Period

Jefferson will assume both the parts and labour expense of correcting defects during the stated warranty periods below.

All warranty periods start from the date of purchase from an authorised Jefferson dealer. If proof of purchase is unavailable from the end user, then the date of purchase will be deemed to be 3 months after the initial sale to the distributor.

1 Year

- All Jefferson Electric Pressure Washers (excluding Spray Guns and Nozzles)

90 Days

- All replacement parts purchased outside of the warranty period

Important: *All parts used in the repair or replacement of warranty covered equipment will be subject to a minimum of 90 days cover or the remaining duration of the warranty period from the original date of purchase.*

Warranty Registration / Activation

You can register and activate your warranty by visiting the Jefferson Tools website using the following address: www.jeffersonstools.com/warranty and completing the online form. Online warranty registration is recommended as it eliminates the need to provide proof of purchase should a warranty claim be necessary.

Warranty Repair

Should Jefferson confirm the existence of any defect covered by this warranty the defect will be corrected by repair or replacement at an authorized Jefferson dealer or repair centre.

Packaging & Freight Costs

The customer is responsible for the packaging of the equipment and making it ready for collection **together with a copy of the original proof of purchase**. Jefferson will arrange collection and transportation of any equipment returned under warranty.

Upon inspection of the equipment, if no defect can be found or the equipment is not covered under the terms of the Jefferson warranty, the customer will be liable for any labour and return transportation costs incurred.

These costs will be agreed with the customer before the machine is returned.

Warranty Limitations

Jefferson will not accept responsibility or liability for repairs made by unauthorised technicians or engineers. Jefferson's liability under this warranty will not exceed the cost of correcting the defect of the Jefferson products.

Jefferson will not be liable for incidental or consequential damages (such as loss of business or hire of substitute equipment etc.) caused by the defect or the time involved to correct the defect. This written warranty is the only express warranty provided by Jefferson with respect to its products.

Any warranties of merchantability are limited to the duration of this limited warranty for the equipment involved.

Jefferson is not responsible for cable wear due to flexing and abrasion. The end user is responsible for routine inspection of cables for possible wear and to correct any issues prior to cable failure.

Claiming Warranty Coverage

The end user must contact Jefferson Professional Tools & Equipment (Tel: +44 (0) 1244 646 048) or their nearest authorised Jefferson dealer where final determination of the warranty coverage can be ascertained.

Step 1 - Reporting the Defect

Online Method:

- Visit our website www.jeffersonstools.com/warranty and complete the Warranty Returns form. You can complete the form online and submit it to us directly or download the form to print out and return by post.

Telephone Method:

Contact your Jefferson dealer or sales representative with the following information:

- Model number
- Serial number (usually located on the specification plate)
- Date of purchase

A Warranty Returns form will be sent to you for completion and return by post or fax, together with details of your nearest authorised Jefferson repair centre. On receipt of this form Jefferson will arrange to collect the equipment from you at the earliest convenience.

Step 2 - Returning the Equipment

It is the customer's responsibility to ensure that the equipment is appropriately and securely packaged for collection. Please ensure that you include a copy of your proof of purchase. Please note that Jefferson cannot assume any responsibility for any damage incurred to equipment during transit. Any claims against a third party courier will be dealt with under the terms & conditions of their road haulage association directives.

Step 3 - Assessment and Repair

On receipt, the equipment will be assessed by an authorised Jefferson engineer and it will be determined if the equipment is defective and in need of repair and any repairs needed are covered by the warranty policy. In order to qualify for warranty cover all equipment presented must have been used, serviced and maintained as instructed in the user manual.

Where repair is not covered by the warranty a quotation for repair, labour costs and return delivery will be sent to the customer (normally within 7 working days).

Note: *If the repair quotation is not accepted Jefferson Professional Tools & Equipment will invoice 1 hour labour time at £30 per hour plus return carriage costs (plus VAT).*

In cases where no fault can be found with the equipment, or, if incorrect operation of the equipment is identified as the cause of the problem, a minimum of 1 hour labour at £30 per hour plus carriage costs will be required before the equipment will be despatched back to the customer.

Any equipment repaired or replaced under warranty will normally be ready for shipment back to the customer within 7 working days upon receipt of the equipment at an authorised Jefferson Repair centre (subject to part availability). Where parts are not immediately available Jefferson will contact you with a revised date for completion of the repair.

General Warranty Enquiries

For any further information relating to Jefferson warranty cover please call **+44 (0) 1244 646 048** or send your enquiry via email to **warranty@jeffersontools.com**.

Jefferson[®]
PROFESSIONAL TOOLS & EQUIPMENT

Parts & Servicing

For Jefferson approved replacement parts contact your
nearest dealer or contact Jefferson tools

Telephone: +44 (0)1244 646 048
Fax: +44 (0)1244 241 191
Email: warranty@jeffersontools.com

Disclaimer:

The information in this document is to the best of our knowledge true and accurate, but all recommendations or suggestions are made without guarantee. Since the conditions of use are beyond their control, Jefferson Tools® disclaim any liability for loss or damage suffered from the use of this data or suggestions. Furthermore, no liability is accepted if use of any product in accordance with this data or suggestions infringes any patent. Jefferson Tools® reserve the right to change product specifications and warranty statements without further notification. All images are for illustration purposes only.

IMPORTANT! SAFETY FIRST!

Before attempting to use this product please read all the safety precautions and operating instructions outlined in this manual to reduce the risk of fire, electric shock or personal injury.



This product must not be disposed with normal household waste.



Jefferson Tools,
Herons Way,
Chester Business Park,
Chester, United Kingdom, CH4 9QR
Tel. +44 (0)1244 646 048
Email: sales@jeffersonstools.com

www.jeffersonstools.com