

Jefferson®

PROFESSIONAL TOOLS & EQUIPMENT

MULTI-PROCESS
200 AMP
MIG • TIG • ARC WELDER • 230V



JEFMIG200P-230

User Manual
v.1.1



CONTENTS

Introduction	4
Specifications	5
Operating Guide - Control Panel	5
Safety Guidelines	6
Working Environment	8
Connecting To The Power Supply	8
Welding Current & Arc Voltage	8
Maintenance	8
Troubleshooting	9
Parts Diagram	10
Parts List	11
Environmental Protection	12
WEEE Waste Electrical and Electronic Equipment Statement	12
EC Declaration of Conformity	13
Limited Warranty Statement	14

Important: Please read all these instructions before operating this product and save these instructions. This manual has been compiled by Jefferson Tools and is an integrated part of the product with which it's enclosed and should be kept with it for the future reference.

This manual describes the purpose for which the product has been designed and contains all the necessary information to ensure its correct and safe use. We recommend that this manual is read before any operation or, before performing any kind of adjustment to the product and prior to any maintenance tasks. By following all the general safety instructions contained in this manual you will help to ensure operator safety and extend the potential lifespan of the equipment.

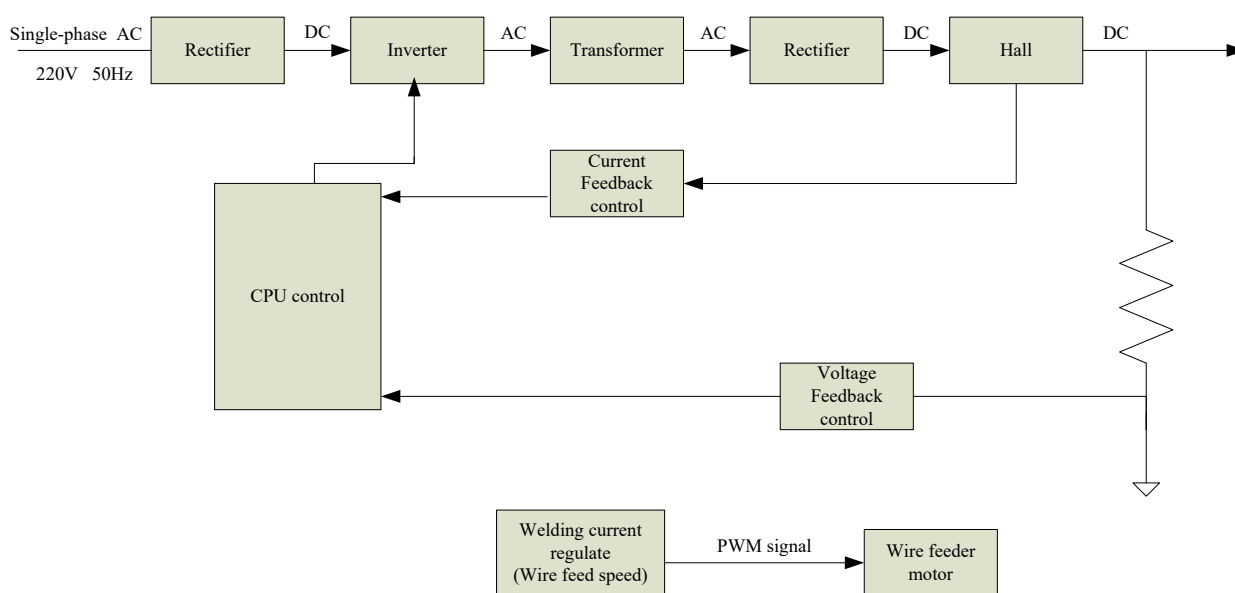
All photographs and drawings in this manual are supplied by Jefferson Tools to help illustrate the operation of the product. Whilst every effort has been made to ensure accuracy of information contained in this manual our policy of continuous improvement determines the right to make modifications without prior warning.

Note: The information contained in this Instruction Manual is designed to assist you in the safe operation and maintenance of the equipment. Some illustrations in this Instruction Manual may show details or attachments that differ from those on your own equipment. Contact your nearest Jefferson Dealer if you are unsure about any information included in this manual or require any additional information about the safe use, operation maintenance, or repair of this equipment.

INTRODUCTION

- Multi process 200 amp MIG/TIG/ARC Welder
- Internal wire feed system
- Compatible with 7.5kg wire rolls of FE, SS & AL
- 230V - 32A Input: MIG 200A / TIG 200A / ARC 170A
- With Power Factor Correction
- Supplied in BMC Case with 250A Mig Torch / Tig Torch / Argon Regulator / 3M Earth Lead / Gas Hose / 4M Electrode Holder

Working Principles:



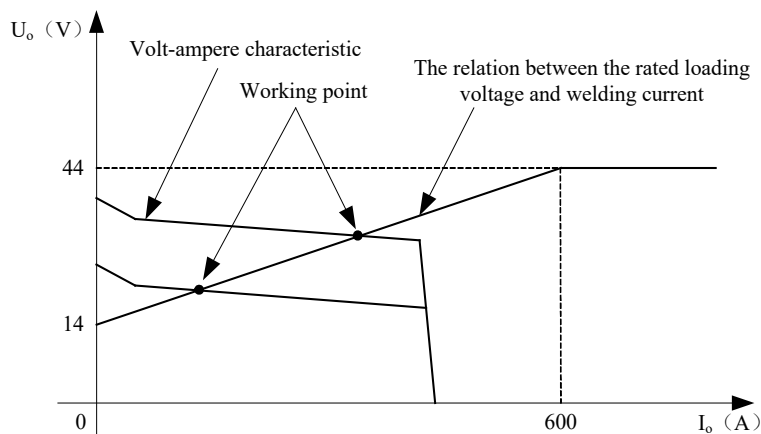
This equipment has an excellent volt-ampere characteristic with the relation between the rated loading voltage U_2 and welding current I_2 is as follows: $U_2 = 14 + 0.05I_2(V)$ (see diagram below)

Duty Cycle

The duty cycle is the proportion (percentage) of time that the welder can work continuously within a 10 minute period at the rated welding current. For example, 60% = 6 minutes constant welding every ten minutes.

Over-heating

In the event of over-heating, the IGBT protection unit will send an instruction to cut-off the welding current. An over-heating state will be indicated by the alarm light on the control panel on the front of the welder. Allow the welder to cool for 10 minutes and reduce the welding output current before starting the welding process again (or else reduce the duty cycle).

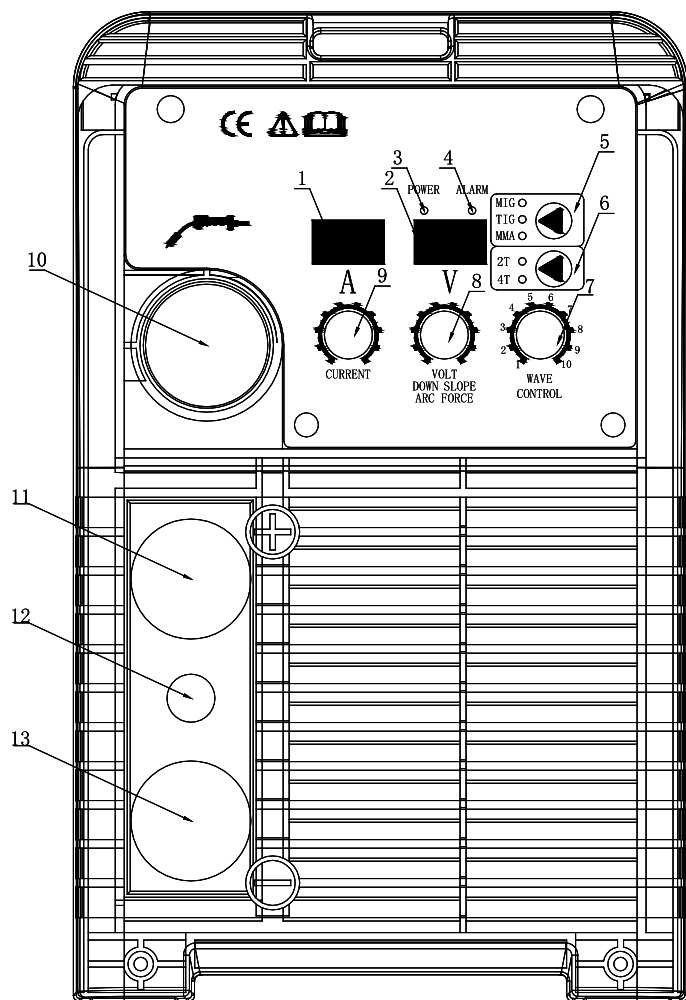


SPECIFICATIONS

JEFMIG200P-230	
Input Voltage	230V ~ 50Hz
Input Current	MIG 37A MMA 33A TIG 29A
Input Power	MIG 5.9kW MMA 5.4kW TIG 4.5kW
Welding Current	10-170A MMA • 25-200A (MIG/MAG) • 10-200A TIG
No-load Voltage	58V (MMA)
Duty Cycle (40°C)	25% 200A (TIG/MIG) • 30% 170A (MMA) • 60% 115A • 100% 90A
Wire Diameter	FE: 0.6 / 0.8 / 0.9 / 1.0mm • SS 0.8 / 0.9 / 1.0mm • AL 1.0mm
Protection class	IP23S
Insulation class	F
Dimensions	470 x 210 x 380mm
Weight	13.5kg

Please note: Specifications may be subject to change over time.

OPERATING GUIDE - CONTROL PANEL



#	Description
1	Working Current Display (in Amps)
2	Voltage Display
3	Power LED
4	Alarm LED
5	Welding Process Selection: MMA • TIG • MIG
6	Welding Mode Selection: 2T • 4T (When in MIG / TIG process)
7	ARC Wave Control: Determines the rate at which the amperage rises when a short circuit is produced.
8	Welding voltage/Down slope/Arc force: On MIG, When the program voltage can't perfectly match the welding current, this dial can be used to adjust the welding voltage. On TIG, the dial can be used to adjust the current down time. On MMA, the dial can be used to adjust the force current.
9	Welding Current: Set the required welding current
10	MIG Torch Connection
11	Output Anode: (TIG mode workpiece connection)
12	TIG Connection
13	Output Cathode: (MIG mode workpiece connection)

SAFETY GUIDELINES



Please read and ensure that you understand all of the operating instructions, safety precautions and warnings in this Instruction Manual before operating or maintaining this equipment. Most accidents that result from equipment operation and maintenance are caused by the failure to observe basic safety rules or precautions. An accident can often be avoided by recognizing a potentially hazardous situation before it occurs, and by observing appropriate safety procedures. Hazards that must be avoided to prevent bodily injury or machine damage are identified by warnings on the welder and in this Instruction Manual. Never use this welder or modify it in any way that has not been specifically recommended by the manufacturer. Contact a qualified electrician for advice on any issues relating to electrical safety in your working environment.

ELECTRICAL SAFETY



Ensure that you check the equipment thoroughly to ensure it is safe and fit for purpose before each use. It is important that you inspect all plugs, sockets, power cables and electrical fittings for wear and damage and repair or replace any defective components. The risk of electric shock can be minimised by the correct use of the appropriate electrical safety devices.

- We recommend that you fit a **Residual Current Circuit Breaker (RCCB)** in the main distribution board and that a **Residual Current Device (RCD)** is used when operating this equipment.
- The **Electricity at Work Act 1989** includes legislation that places legal implications on employers to ensure the safety of electrical devices in the workplace. The regulations dictate that all portable equipment must be inspected regularly and tested to ensure that it is safe for use. 'Portable equipment' means any electrical item that can be moved and this is often referred to as **Portable Appliance Testing (PAT)**. PAT testing should be carried out regularly on this equipment by trained, authorised personnel, as required by the legislation.
- The **Health and Safety at Work Act 1974** states that it is the responsibility of the owner of electrical appliances to ensure that both the equipment and working environments are maintained to ensure safe operation at all times.
- Check that all equipment cables are secure, correctly insulated, free from damage, and protected against short circuit and overload before connecting to the power supply. Do not use worn or damaged cables, plugs, sockets or other fittings.
- Ensure that the power supply matches voltage requirements specified on the equipment.
- Ensure the power cable is kept away from heat, oil and sharp edges.
- Do not carry the welder while it is connected to its power source.
- Do not use this equipment in damp / wet conditions.

Welding processes require a high voltage electrical supply which can cause serious injury or death if the correct safety standards and procedures are not observed.

Ensure that the following general safety guidelines are followed when using this equipment:

- Always wear dry clothing and personal protection equipment and ensure that you are insulated from the workpiece.
- Ensure that the insulation is large enough to cover the full extent of the working area.
- Ensure that the work piece is electrically grounded to an earth source before starting the welding process.
- Never touch any "live" parts or components.
- Always disconnect the equipment from the power source before carrying out any service or adjustments.
- Many components including circuits, nozzles and electrodes can become electrically hot during operation - take care not to touch any parts until they have cooled sufficiently
- Always ensure that the power cable is long enough to allow you to work at a safe distance from the work piece.
- Ensure that all welding and safety equipment is well-maintained and in full working order before use.
- Never dip the electrode in water for cooling purposes.
- When working above floor level always wear a safety belt to provide fall protection in the event of an electrical shock.
- Ensure that welding work is carried out in a dry environment. Never work with wet equipment or in damp environments.

Note: Some internal electronic components remain positively charged for up to 90mins after disconnecting from the mains power supply.

EQUIPMENT SAFETY

General Safety

Operation and maintenance of this equipment can be dangerous and harmful to your health. It is important that you read these instructions carefully and follow all safety procedures listed. This equipment and any accessories should only be used by fully-trained individuals and any servicing or maintenance must be carried out by qualified and certified technicians. Please ensure that you check with your nearest Jefferson stockist for advice if you are unsure about any of the information contained in this manual or contact enquiries@jeffersonstools.com. Do not modify or adjust this equipment for any other use other than that for which it was designed. Only use Jefferson approved replacement parts.

Gases & Fumes

Arc welding and cutting processes can produce dangerous fumes and gases. It is important that the following safety precautions are observed:

- Only work in well-ventilated areas
- Keep head and face out of the welding fume
- Use an exhaust at the arc to keep fumes and gases from your breathing area
- Ensure that bystanders, children and animals are kept at safe distance and appropriate ventilation
- Always use an air-supplied respirator when applicable, especially in working environments with poor ventilation to avoid breathing toxic fumes and gases

The type of fumes and gases released during the welding and cutting process will depend on the welding process and types of metal being used. Particular care should be taken when using any of the following:

- Antimony • Arsenic • Barium • Beryllium • Cadmium • Chromium • Cobalt • Copper • Lead • Manganese • Mercury • Nickel • Selenium • Silver • Vanadium

Ensure that you read and fully understand the Material Safety Data Sheet (MSDS) supplied with the welding materials and consumables that you are using.

Pay particular attention to any safety information relating to safe and dangerous fume and gas volumes.

Use water or down draft welding/cutting tables to capture or reduce toxic fumes and gases.

Be careful when operating in environments containing chlorinated solvent hydrocarbon and cleanser vapours (for example from de-greasing or spraying operations) to prevent the generation of toxic Phosgene gas.

Never carry out any welding or cutting work in environments where combustible or explosive gases are present.

Arc Ray Protection

Arc welding is a dangerous process and can cause severe damage to eyes and skin. This equipment should only be used by fully trained and competent individuals.

It is important that you always use the correct Personal Protection Equipment (PPE) and follow the correct procedures at all times.

Always use a suitable safety helmet and visor/glasses to protect against the very bright ultra violet and infra red light. Wear flame resistant welding gloves and gauntlets to protect your hands and arms from sparks and arc rays.

- Keep welding helmet and safety equipment in good condition. Replace lenses when cracked, chipped or dirty.
- Protect others in the vicinity, use fire proof protective booths, shields and screens where appropriate.
- Do not touch work piece & welding wire at the same time. Use only the cables and rods recommended by the manufacturer.

Fire & Explosion Hazards

Fire and explosions can be caused by hot slag, sparks and the welding arc. Ensure that there are no combustible or flammable materials in the workplace. Keep all flammable or combustible materials away from the welding area. Any materials that cannot be removed should be covered or screened.

- Never carry out welding near pets or small children.
- Ensure that a fire extinguisher is available when welding.
- Wear oil free garments without pockets or cuffs.
- Do not weld on combustible or closed containers.

Magnetic Fields

Electrical currents flowing through any conductor causes localised Electrical and Magnetic Fields (EMF). Observe the following safety guidelines:

- Keep people with pacemakers away from the area when the welder is in use.
- Do not wrap the cable around any part of your body while welding.
- Keep all cables as far away from the operator as possible.

WORKING ENVIRONMENT

This equipment is designed for use in the following conditions:

- Areas free from moisture and dust with an ambient temperature between 0° to 40°C
- Areas free from oil steam and corrosive gases
- Areas usually not subjected to abnormal vibration or shock
- Areas with suitable ventilation free from any flammable or combustible materials
- Areas not exposed to direct sunlight or rain

Ensure that the equipment is not placed at a distance of 12" (304.79mm) or more from walls or similar obstructions that could restrict the natural airflow or cooling of the system.

CONNECTING TO THE POWER SUPPLY

Warning: Jefferson Tools recommends that this equipment be grounded and connected by a qualified electrician before use.

Connect the earth cable to a suitable ground in compliance with the applicable electrical regulations. Connection to the correct input supply is necessary to avoid damage to internal components.

Connect the power cable to the required voltage. The primary cable should be connected to the correct supply to avoid arcing or overheating. Ensure that the input power supply is rated to match the maximum output of this equipment (AC, Single Phase, 50Hz, 230V).

WELDING CURRENT & ARC VOLTAGE

The welding power source is designed with a coiled safety feature that can withstand short-term overload without any adverse effects.

The welding current range values indicated on the control panel and specification plate should be used as a guide only.

The current delivered to the arc is dependent on the welding arc voltage and because the welding arc voltage can vary between different classes of electrodes, the welding current at any one setting would vary depending on the type of electrode in use.

Use the supplied welding current range values as a guide and then adjust the current setting to suit the welding materials and processes you are using. If you require any advice, please contact your Jefferson Dealer before attempting to use the equipment.

MAINTENANCE

In order to ensure that this equipment is kept in a safe and efficient working condition please ensure that the following maintenance schedule is observed. **Please note:** Failure to keep this equipment in good working order may increase the risk of damage, injury or accident and may void your standard warranty cover. Contact your nearest Jefferson Dealer for further information about the maintenance and repair of this equipment.

Frequency	Procedure
Daily	Check that equipment housing, dials, switches and connections are clean and free from dirt, dust, debris and grease.
	Check that all cables, plugs and sockets are in good condition. Do not use this equipment if damage is detected. Contact your service agent if required and arrange repair before reusing the equipment.
	Check for any unusual noises or vibration during startup or operation. Contact your service agent if detected.
	Check that the fan is operational, moving freely and free of dust. If the fan is noisy it may indicate that there is a build up of dust and dirt within the housing that may result in overheating and malfunction.
Monthly / Regularly (Depending on use)	Clean the equipment and internal housing using dry compressed air to remove all surfaces of dust and debris.
Quarterly / Regularly (Depending on use)	Check that output current matches the current value shown on the control panel. Calibrate as required. Contact your nearest service agent for advice if required.
Once per Year	Measure the insulating impedance at the main circuit, PCB and case. If it below 1MΩ , the insulation is damaged and in need of repair. Contact your nearest service agent for advice if required.

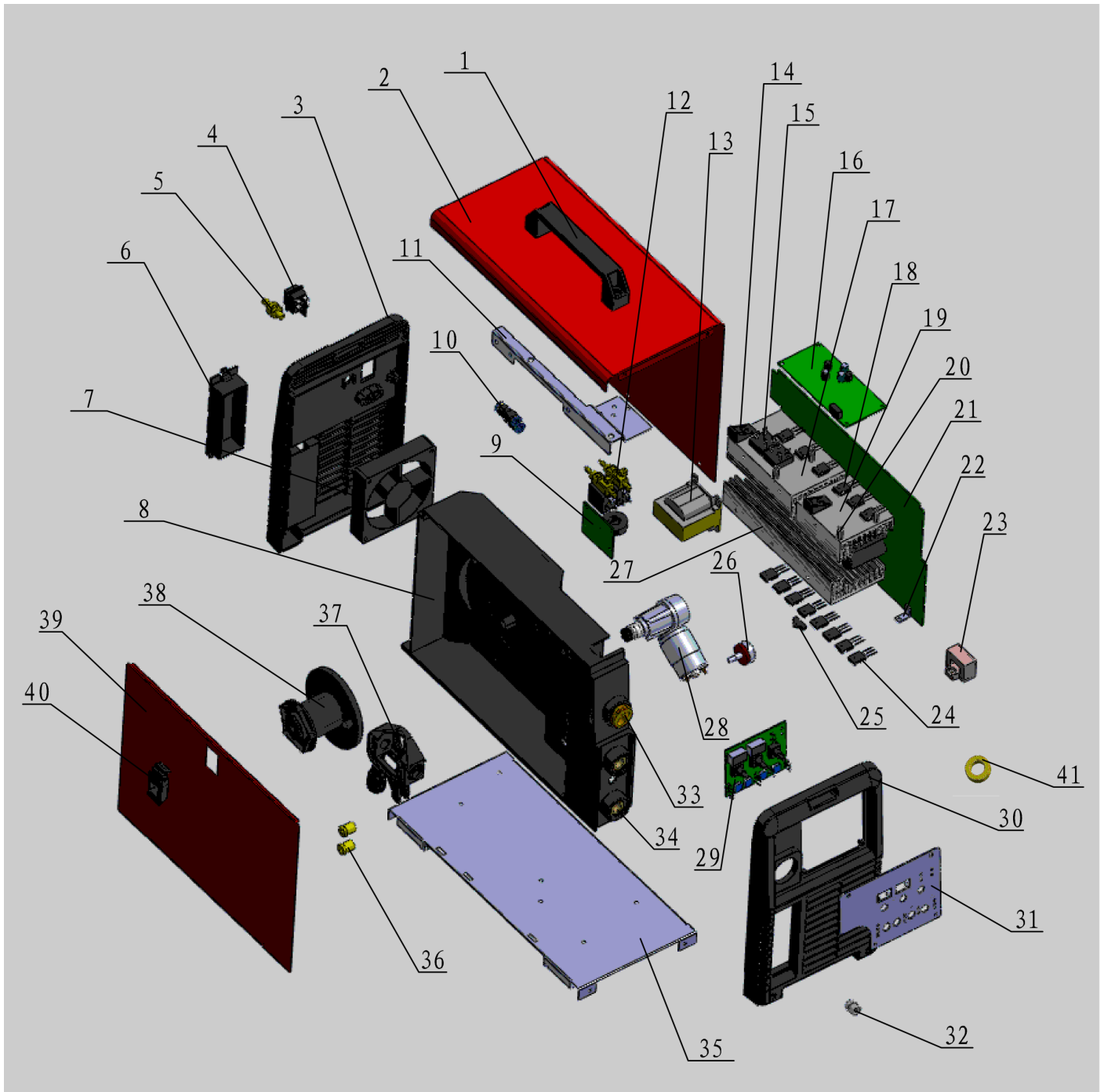
TROUBLESHOOTING

Welding quality is dependant on the selection of the of the correct consumables for the job at hand, maintenance of the equipment, proper preparation and the correct welding techniques. The following troubleshooting guide will help you to identify some of the most common problems you might encounter and the best steps to prevent or overcome them.

Problem	Possible Cause	Solution
Air pockets or voids in the weld metal (porosity)	<ol style="list-style-type: none"> 1. The electrodes are damp 2. The welding current is too high 3. Presence of surface impurities such as oil, grease, paint etc. 	<ol style="list-style-type: none"> 1. Only use dry electrodes 2. Reduce the welding current 3. Clean the joint before welding
Gaps & voids left in the root of the weld root by the electrode	<ol style="list-style-type: none"> 1. Welding current is too low 2. The electrode is too large for the joint 3. Insufficient gap 4. Incorrect sequence 	<ol style="list-style-type: none"> 1. Increase the welding current 2. Use a smaller diameter electrode 3. Allow a wider gap 4. Use the correct build-up sequence
Cracks appearing in the weld metal soon after solidification commences	<ol style="list-style-type: none"> 1. Pressure on the weld joint 2. Insufficient throat thickness 3. Cooling rate is too high 	<ol style="list-style-type: none"> 1. Reposition the weld joint with less stress / pressure or try using a crack resistant electrode 2. Travel slightly slower to allow greater build up in the throat 3. Preheat the plate and cool slowly
Portions of the weld run do not fuse to the surface of the metal or edge of the joint	<ol style="list-style-type: none"> 1. The electrode is too small for the welding process and/or used on plate that is too heavy or too cold. 2. Welding current is too low 3. Electrode is being used at the wrong angle 4. The travel speed of the electrode is too fast 5. There is scale or dirt on the joint surface 	<ol style="list-style-type: none"> 1. Use larger electrodes and preheat the plate 2. Increase the welding current 3. Adjust the angle so that the welding arc is directed more into the base metal 4. Reduce the travel speed of the welding electrode 5. Clean the surface before welding
Non-metallic particles are trapped in the weld metal (slag inclusion)	<ol style="list-style-type: none"> 1. Non metallic particles may be trapped in any undercut from the previous run 2. Joint preparation was not carried out correctly or was too restricted 3. Irregular deposits allow slag to be trapped 4. Lack of penetration from the welding arc because of slag trapped beneath the weld bead 5. Rust or mill scale is preventing full fusion 6. The wrong electrode for position in which welding 	<ol style="list-style-type: none"> 1. If bad undercut is present clean the slag out and cover with a run from a smaller diameter electrode 2. Allow for adequate penetration and room by cleaning and removing any slag. 3. Remove the irregular deposits by chipping or grinding out the irregular deposits. 4. Use a smaller electrode with sufficient current to give 5. Clean the joint thoroughly before welding 6. Use electrodes best suited for the position in which the welding process is carried out
Unable to establish a welding arc	<ol style="list-style-type: none"> 1. The primary supply voltage has not been switched on 2. The welding power source has been disconnected 3. Loose internal electrical connections 	<ol style="list-style-type: none"> 1. Switch on the primary supply voltage 2. Switch on the welding power source 3. Have the equipment and circuitry checked and repaired by a qualified engineer
Maximum output welding current cannot be achieved with nominal mains supply voltage	Defective control circuit	Have a qualified service engineer inspect and repair the equipment
Welding current is reduced during the welding process	Poor work lead connection to the work piece	Ensure that the work lead has a positive electrical connection to the work piece
Power outage / pilot light off / Fan is not operating	<ol style="list-style-type: none"> 1. Input voltage failure 2. Over voltage 3. Internal electrical fault 	<ol style="list-style-type: none"> 1. Re-establish mains supply 2. Check required voltage for the equipment, if necessary move the equipment to a suitable supply source 3. Have machine tested and repaired by a qualified technician
The fault indicator light is displayed and no power is being supplied	<ol style="list-style-type: none"> 1. The equipment has over-heated 2. The equipment is in an over current cut-off state 3. Internal electrical fault 	<ol style="list-style-type: none"> 1. Allow the equipment to cool with the fan-running 2. Switch off the mains supply to the equipment and re-start 3. Have machine tested and repaired by a qualified technician

Contact your nearest Jefferson Dealer if you are unsure about any of the information shown above or require any assistance with maintaining or troubleshooting your equipment. We recommend that all repairs should be carried out by an approved service agent using Jefferson approved replacement parts as required. Do not attempt to modify the equipment in anyway.

PARTS DIAGRAM



PARTS LIST - MAIN ASSEMBLY

No.	Description
1	Handle
2	Lateral Cover (Left)
3	Rear Panel
4	Switch
5	Quick Connector
6	Cover Of Accessory Box
7	Fan
8	Insulation Panel
9	EMC PCB
10	Connector
11	Gas Valve Mounting Sheet
12	Solenoid Valve
13	Main Transformer
14	Support Pillar
15	Rectifier
16	Control PCB
17	Heat Sink 2
18	IGBT
19	Heat Sink 3
20	Insulation Pillar
21	Power System
22	Support Pillar
23	Current Sensor
24	Diode
25	Thermistor
26	Potentiometer
27	Heat Sink I
28	Motor
29	Front PCB
30	Front Panel
31	Front PCB Mounting Sheet
	Front PCB Mounting Sheet
32	3 Pin Socket
33	Central Plug
34	35 x 70 mm ² Socket
35	Base Panel
36	Connector
37	Wire Feeder Frame
38	Spool
39	Lateral Cover (Right)
40	Lock
41	Inductance
42	Wire-Feed Roll 0.8-1.0

ENVIRONMENTAL PROTECTION



**PLEASE
RECYCLE**

Recycle any packaging and unwanted materials instead of disposing of them as waste. All tools, accessories and packaging should be sorted, taken to a recycling centre and disposed of in a manner which is compatible with the environment.

When the product becomes completely unserviceable, reaches the end of its working life and requires disposal, drain off any fluids (if applicable) into approved containers and dispose of the product and the fluids according to local regulations.

WEEE Waste Electrical and Electronic Equipment Statement



Information on Disposal for Users of Waste Electrical & Electronic Equipment

This symbol on the product(s) and / or accompanying documents means that used electrical and electronic products should not be mixed with general household waste. For proper treatment, recovery and recycling, please take this product(s) to designated collection points where it will be accepted free of charge.

For private households:

Dispose of this product at the end of its working life and in compliance with the EU Directive on Waste Electrical and Electronic Equipment (WEEE). Contact your local solid waste authority for recycling information for this equipment.

Disposing of this product correctly will help save valuable resources and prevent any potential negative effects on human health and the environment, which could otherwise arise from inappropriate waste handling.

Please contact your local authority for further details of your nearest designated collection point.

Penalties may be applicable for incorrect disposal of this waste, in accordance with your national legislation.

For business users in the European Union:

If you wish to discard electrical and electronic equipment, please contact your dealer or supplier for further information.

Information on Disposal in other Countries outside the European Union:

This symbol is only valid in the European Union. If you wish to discard this product please contact your local authorities or dealer and ask for the correct method of disposal.

EC DECLARATION OF CONFORMITY

We, Tundra Industrial, as the authorised European Community representative of the manufacturer, declare that the following equipment conforms to the requirements of the following Directives:

Directive:	Description:
EN 60974-1:2005 (as amended)	Arc welding equipment -- Part 1: Welding power sources
2006/95/EC (as amended)	Low Voltage Directive

Equipment Category: Multi Process Welder
Product Name/Model: JEFMIG200P-230 200 Amp MIG / TIG / ARC Welder

Signed by:

Stephen McIntyre



Position in the company:

Operations Director

Date:

13 March 2012

Name and address of manufacturer

or authorised representative:

Jefferson Tools, Herons Way, Chester Business
Park, Chester, United Kingdom, CH4 9QR
Telephone: +44 (0)1244 646 048
Fax: +44 (0)1244 241 191
Email: enquiries@jeffersonstools.com

LIMITED WARRANTY STATEMENT

Jefferson Professional Tools & Equipment, or hereafter "Jefferson" warrants its customers that its products will be free of defects in workmanship or material. Jefferson shall, upon suitable notification, correct any defects, by repair or replacement, of any parts or components of this product that are determined by Jefferson to be faulty or defective.

This warranty is void if the equipment has been subjected to improper installation, storage, alteration, abnormal operations, improper care, service or repair.

Warranty Period

Jefferson will assume both the parts and labour expense of correcting defects during the stated warranty periods below.

All warranty periods start from the date of purchase from an authorised Jefferson dealer. If proof of purchase is unavailable from the end user, then the date of purchase will be deemed to be 3 months after the initial sale to the distributor.

1 Year

- JEFMIG200P-230 - 200 Amp MIG / TIG / ARC Welder

90 Days

- All replacement parts purchased **outside** of the warranty period

Important: All parts used in the repair or replacement of warranty covered equipment will be subject to a minimum of 90 days cover or the remaining duration of the warranty period from the original date of purchase.

Warranty Registration / Activation

You can register and activate your warranty by visiting the Jefferson Tools website using the following address:

www.jeffersonstools.com/warranty and completing the online form. Online warranty registration is recommended as it eliminates the need to provide proof of purchase should a warranty claim be necessary.

Warranty Repair

Should Jefferson confirm the existence of any defect covered by this warranty the defect will be corrected by repair or replacement at an authorized Jefferson dealer or repair centre.

Packaging & Freight Costs

The customer is responsible for the packaging of the equipment and making it ready for collection. Jefferson will arrange collection and transportation of any equipment returned under warranty. Upon inspection of the equipment, if no defect can be found or the equipment is not covered under the terms of the Jefferson warranty, the customer will be liable for any labour and return transportation costs incurred.

These costs will be agreed with the customer before the machine is returned.

** Jefferson reserve the right to void any warranty for damages identified as being caused through misuse*

Warranty Limitations

Jefferson will not accept responsibility or liability for repairs made by unauthorised technicians or engineers. Jefferson's liability under this warranty will not exceed the cost of correcting the defect of the Jefferson products.

Jefferson will not be liable for incidental or consequential damages (such as loss of business or hire of substitute equipment etc.) caused by the defect or the time involved to correct the defect. This written warranty is the only express warranty provided by Jefferson with respect to its products.

Any warranties of merchantability are limited to the duration of this limited warranty for the equipment involved.

Jefferson is not responsible for cable wear due to flexing and abrasion. The end user is responsible for routine inspection of cables for possible wear and to correct any issues prior to cable failure.

Claiming Warranty Coverage

The end user must contact Jefferson Professional Tools & Equipment (Tel: +44 (0) 1244 646 048) or their nearest authorised Jefferson dealer where final determination of the warranty coverage can be ascertained.

Step 1 - Reporting the Defect

Online Method:

- Visit our website www.jeffersonstools.com/warranty and complete the Warranty Returns form. You can complete the form online and submit it to us directly or download the form to print out and return by post.

Telephone Method:

Contact your Jefferson dealer or sales representative with the following information:

- Model number
- Serial number (usually located on the specification plate)
- Date of purchase

A Warranty Returns form will be sent to you for completion and return by post or fax, together with details of your nearest authorised Jefferson repair centre. On receipt of this form Jefferson will arrange to collect the equipment from you at the earliest convenience.

Step 2 - Returning the Equipment

It is the customer's responsibility to ensure that the equipment is appropriately and securely packaged for collection, **together with a copy of the original proof of purchase**. Please note that Jefferson cannot assume any responsibility for any damage incurred to equipment during transit. Any claims against a third party courier will be dealt with under the terms & conditions of their road haulage association directives.

Please note: Jefferson will be unable to collect or process any warranty requests without a copy of the original proof of purchase.

Step 3 - Assessment and Repair

On receipt, the equipment will be assessed by an authorised Jefferson engineer and it will be determined if the equipment is defective and in need of repair and any repairs needed are covered by the warranty policy. In order to qualify for warranty cover all equipment presented must have been used, serviced and maintained as instructed in the user manual.

Where repair is not covered by the warranty a quotation for repair, labour costs and return delivery will be sent to the customer (normally within 7 working days).

Note: If the repair quotation is not accepted Jefferson Professional Tools & Equipment will invoice **1 hour labour time at £30 per hour plus return carriage costs (plus VAT)**.

In cases where no fault can be found with the equipment, or, if incorrect operation of the equipment is identified as the cause of the problem, a minimum of 1 hour labour at **£30 per hour plus carriage costs** will be required before the equipment will be despatched back to the customer.

Any equipment repaired or replaced under warranty will normally be ready for shipment back to the customer within 7 working days upon receipt of the equipment at an authorised Jefferson Repair centre (subject to part availability). Where parts are not immediately available Jefferson will contact you with a revised date for completion of the repair.

General Warranty Enquiries

For any further information relating to Jefferson warranty cover please call **+44 (0) 1244 646 048** or send your enquiry via email to **warranty@jeffersonstools.com**

Disclaimer:

The information in this document is to the best of our knowledge true and accurate, but all recommendations or suggestions are made without guarantee. Since the conditions of use are beyond their control, Jefferson Tools® disclaim any liability for loss or damage suffered from the use of this data or suggestions. Furthermore, no liability is accepted if use of any product in accordance with this data or suggestions infringes any patent. Jefferson Tools® reserve the right to change product specifications and warranty statements without further notification. All images are for illustration purposes only.



IMPORTANT! SAFETY FIRST!

Before attempting to use this product please read all the safety precautions and operating instructions outlined in this manual to reduce the risk of fire, electric shock or personal injury.



Jefferson Tools,
Herons Way,
Chester Business Park,
Chester,
United Kingdom,
CH4 9QR

Tel. +44 (0)1244 646 048
Email: sales@jeffersonstools.com